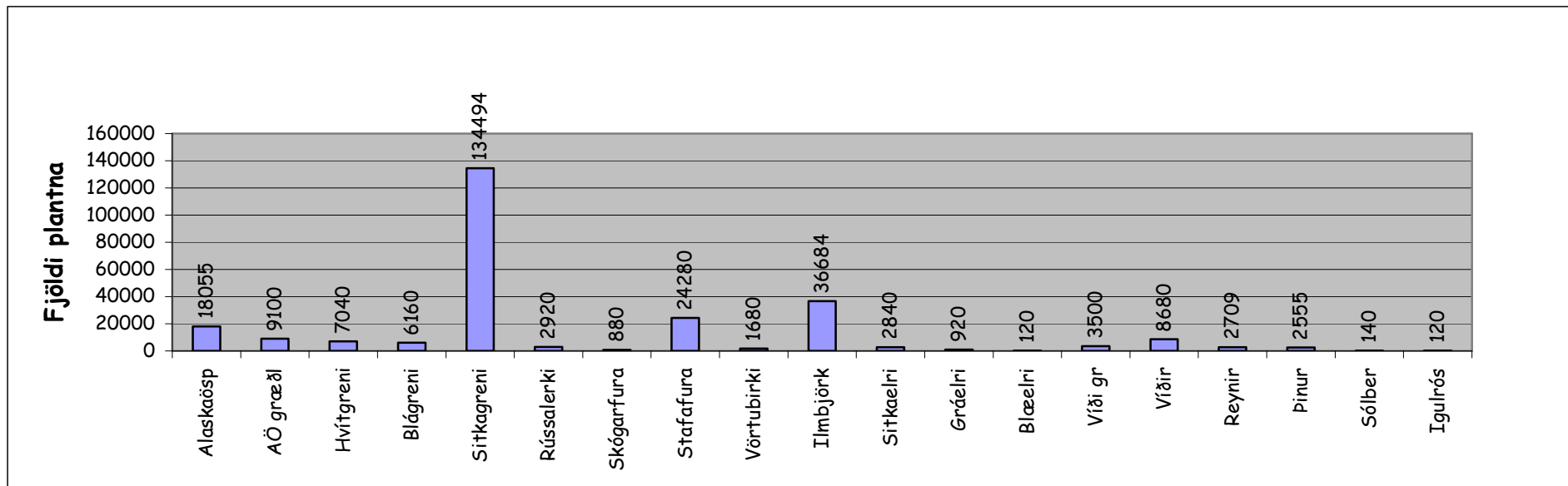


Fjöldi skógarplantna í Árnassýslu árið 2001

	AÖ	AÖ st	HG	BG	SG	RL	Skf	Stf	VB	IB	SE	GE	BE	V st	V	R	P	Sólb	Rós	Samtals	ÁB
Austurey 1-3	1470				9032															10502	5
Ásólfstaðir			160	240	2984	880		1240	160							24	140			5828	2
Ásgerði	490					480		800		800							70			2640	1
Efri-Grímslækur	595			80	448			400		280										1803	
Efra-Sel					1680			240		240					70	24	350			2604	2
Eyvindartunga	350		480	200			480	1000		2000							490			5000	2
Foss					2000			1320		1200										4520	1
Fossnes					192			200		240										632	
Galtalækur	2485		1000		3496			400		400	120	120			140	2229	35	70		10495	20
Gerðakot	1120		320		1600		120	600	200	1000	1000						280		24	6264	6
Gljúfur			40		1200		200	800		5480	200		120			120	175		24	8359	
Gýgarhóll	980				1296			1000		520		200				72	105	35		4208	1
Hamarsheiði					5568				480	2520	560	480			1050		280			10938	5
Helgastaðir									120						525		70		24	739	
Hrosshagi				120	3040					200							105			3465	1
Hraun			400	2000	7000	1560		4240		3000							175			18375	6
Kiðjaberg															3150					3150	1
Lækjarbrekka	2345		520	80	5520			4440	320	9294	760					72			48	23399	12
Lækur										3520										3520	
Reykjadalur	1750				1200															2950	
Reykir	280				8048									3000						11328	5
Sandlækur	1190				792			680		320										2982	1
Skáldabúðir											40				840			35		915	

Árn	AÖ	AÖst	HG	BG	SG	RL	Skf	Stf	VB	IB	SE	GE	BE	V st	V	R	P	Sólb	Rós	Samtals	ÁB
Sólheimar	5000				12500															17500	
Sóleyjabakki		7100	4120	2520	60508			5000							1680	48				80976	20
Spóastaðir		2000			4390			520						500			210			7620	2
Stiflisdalur				400			80	400		5000					1225	24				7129	2
Vatnsleysa				520	2000			1000	400	670	160	120				96	70			5036	2
Samtals	18055	9100	7040	6160	134494	2920	880	24280	1680	36684	2840	920	120	3500	8680	2709	2555	140	120	262877	97

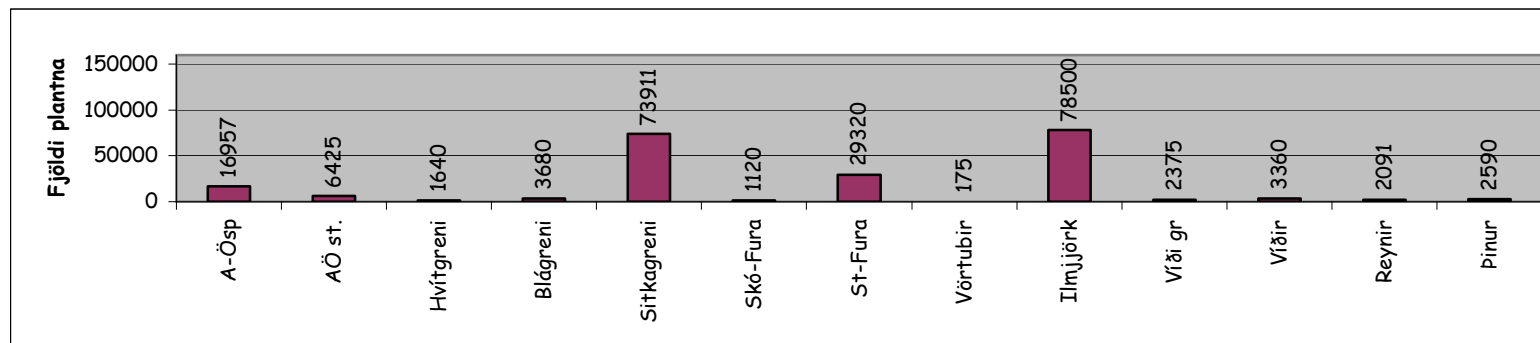
Fjöldi skógarplantna í Árnassýslu árið 2001



Fjöldi skógarplantna í Rangárvallasýslu árið 2001

Rang	AÖ	AÖ,st	HG	BG	SG	Sk f	St f	VB	IB	V st	V	R	P	Samtals	Áb
Búland									6448					6448	3
Flagbjarnarholt		2000			4880		2080							8960	4
Kaldbakur		1150		400	5040		2480		8295					17365	7
Keldur					2832		8440		17360					28632	14
Kanastaðir	210						600		10026					10836	3
Mykjunes		2250	1440		13432	960	5280		7396	500			210	31468	12
Uppsáir	1260	550			1080		320		2360			96		5666	2
Torfastaðir	4760	100	200	1760	24435	80	4000	175	10000		1505	120	560	47695	19
Tjörfastaðir				120	168		280		400		140			1108	1
Varmidalur	9327			1000	21064		4000		3000					38391	17
Voðmúlastaðir					180				6475					6655	3
Vorsabær	175					80	1120		6180					7555	3
Ytra-Seljaland	1225	375								1875	1715			5190	
Pverlækur				400	800		720		560				105	2585	1
Samtals	16957	6425	1640	3680	73911	1120	29320	175	78500	2375	3360	2091	2590	218554	89

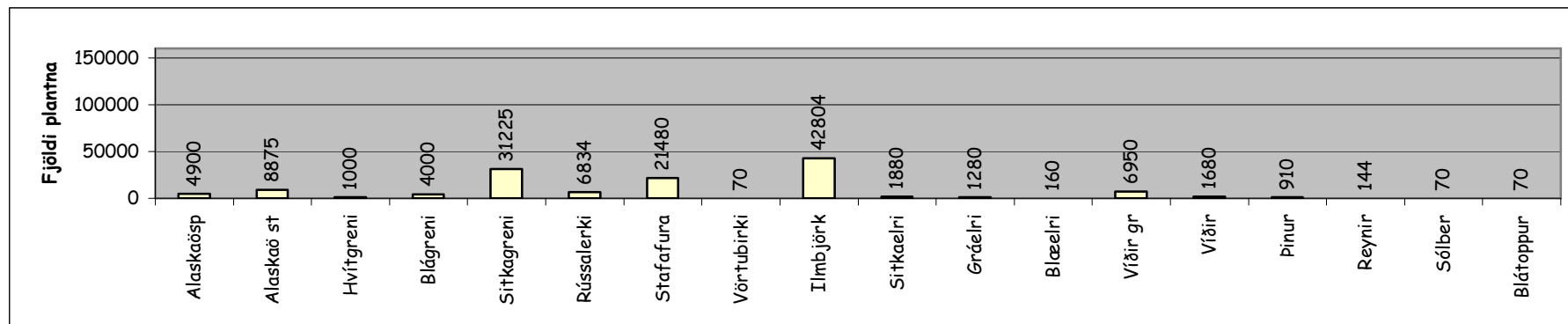
Fjöldi skógarplantna í Rangárvallasýslu



Fjöldi skógarplantna í V-Skaftafellssýslu árið 2001

V-Skaft	AÖ	AÖ st	HG	BG	SG	RL	Stf	VB	IB	GE	GE	BE	Vst	V	P	S	Sólb	Bl+	Samtals	Áb
Blómsturvellir	1575				1800				6800										10175	2
Efri-Vík					5960		3000												8960	4
Giljaland			1000	800	3680	3015	2000								210				10705	4
Hemrumörk				1000			3000		4500	520				1470	210	144			10844	4
Kirkjubær 2	175			200				70	536										981	1
Orustustaðir/Hörg	700			2000	8265				4999										15964	31
Prestsbakkakot	945				4160	2814	1800		1273				1000	210	490		70	70	12832	3
Skaftárdalur							1480		3386										4866	2
Skál									3000										3000	
Teygingarlækur	315	150											5950						6415	7
Úthlíð					1200	1005	1000		804										4009	4
Ytri-Ásar	1190	8725			6160		9200		17506	1360	1280	160							45581	18
Samtals	4900	8875	1000	4000	31225	6834	21480	70	42804	1880	1280	160	6950	1680	910	144	70	70	134332	80

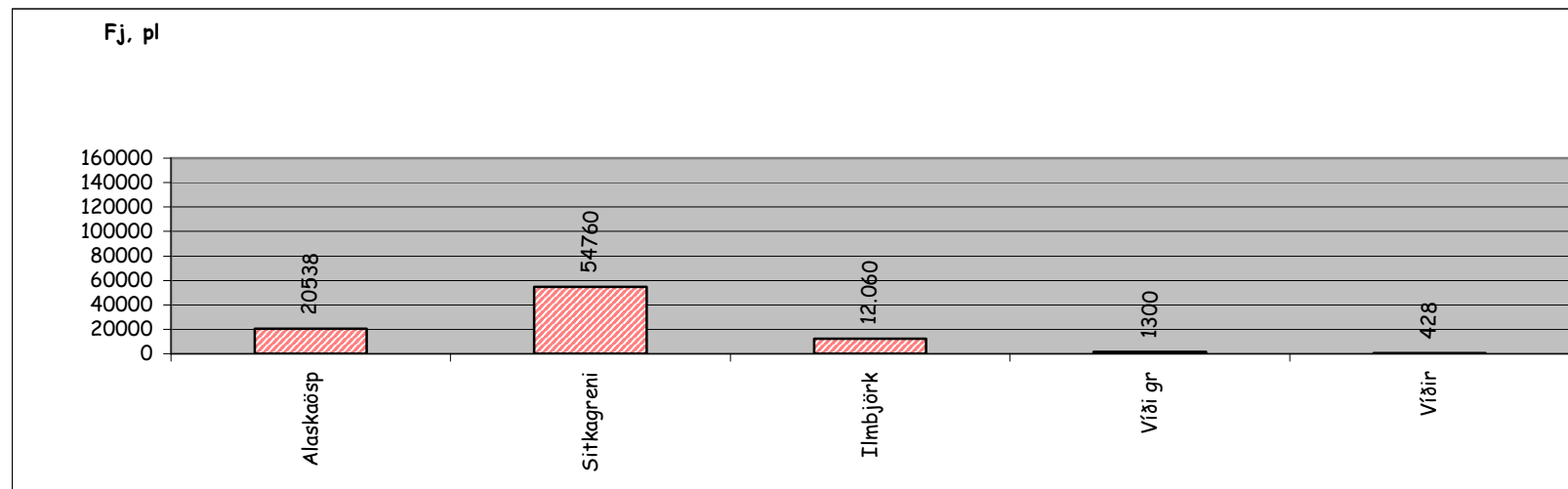
Fjöldi skógarplantna



Fjöldi skógarplantna í A-Skaftafellssýslu árið 2001

A-Skaft	AÖ	SG	IB	V st	V	Samtals	Áb
Klettabrekka	10430	23280	1139		236	35085	11
Lindarbakki	875	560	1005		120	2560	2
Meðalfell	6433	22280	5896	1300		35909	11
Miðfell	1925	5840	2010			9775	6
Stóralág	875	2800	2010		72	5757	3
Samtals	20538	54760	12060	1300	428	89086	33

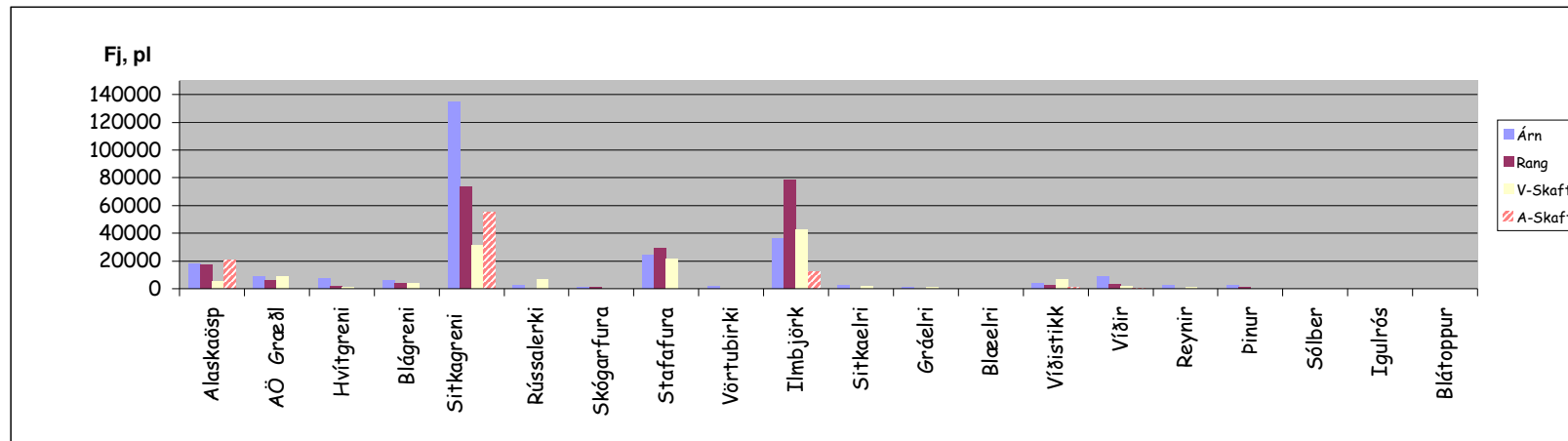
Fjöldi skógarplantna



Sls.samantekt-skógarplöntur árið 2001

	AÖ	AÖ st	HG	BG	SG	RL	Skf	Stf	VB	IB	SE	GE	BE	V st	V	R	P	Sólb	Rós	BT	Samtals	ÁB
Árn	18055	9100	7040	6160	134494	2920	880	24280	1680	36684	2840	920	120	3500	8680	2709	2555	140	120	0	262877	97
Rang	16957	6425	1640	3680	73911	0	1120	29320	175	78500	0	0	0	2375	3360	216	875	0	0	0	218554	89
V-Skaft	4900	8875	1000	4000	31225	6834	0	21480	70	42804	1880	1280	160	6950	1680	910	144	70	0	70	134332	79
A-Skaft	20538	0	0	0	54760	0	0	0	0	12060	0	0	0	1300	428	0	0	0	0	0	89086	33
Samtals	60450	24400	9680	13840	294390	9754	2000	75080	1925	170048	4720	2200	280	14125	14148	3835	3574	210	120	70	704849	298

Fjöldi skógarplantna



Árnessýsla	Samtals	262877
Rangárvallasýsla	Samtals	218554
Vestur-Skaftafessýsla	Samtals	134332
Austur-Skaftafessýsla	Samtals	89086
Heildarútplöntun	Samtals	704849

Sls.-samantekt skjólbeltaplöntur árið 2001.

	Alaskaö	AÖ st	Sitkagr	Blágr	Hvítgr	Stafaf	Birki	V Birki	Víðir	Víðist	Reynir	Annað	Samtals	Plast
Árn	5355	400	2272	200	80	840	1000	480	13265		376	1590	25858	35
Rang	1260	2300	548						7385	15025	120	129	26767	23
V-Skaft	35		200				201		280			185	901	2
A-Skaft	541								590	2936		105	4172	9
Samtals	7191	2700	3020	200	80	840	1201	480	21520	17961	496	2009	57698	69

Fjöldi skjólbeltaplantna

